

# Cal.PE11

Ø 15.55 mm

H 3.15 mm

Item	Version No
Specification	Version 1
Appearance	Version 1
Casing	Version 1
Hand Fitting	Version 1
Hands	Version 1
Dial - 1	Version 1

# Movement Specification

PE11 5<sup>1/2</sup> Quartz Movement

3 Hands

## 1.MOVEMENT DIMENSIONS

- Outside diameter  $\varnothing 15.55\text{mm} \times 13\text{mm}$
- Total height 3.15mm

## 2.TIME STANDARD

- Frequency of quartz oscillator 32768Hz
- Accuracy Monthly rate: Less than  $\pm 45$  seconds per month at normal temperature range

## 3.BATTERY

- Type Silver oxide battery
- Size  $\varnothing 5.8 \times t 2.6(\text{mm})$
- Recommended battery SR526SW

4.OPERATING TEMPERATURE RANGE From  $-5^{\circ}\text{C} \sim 50^{\circ}\text{C}$

5. OPERATING VOLTAGE 1.25V~1.65V

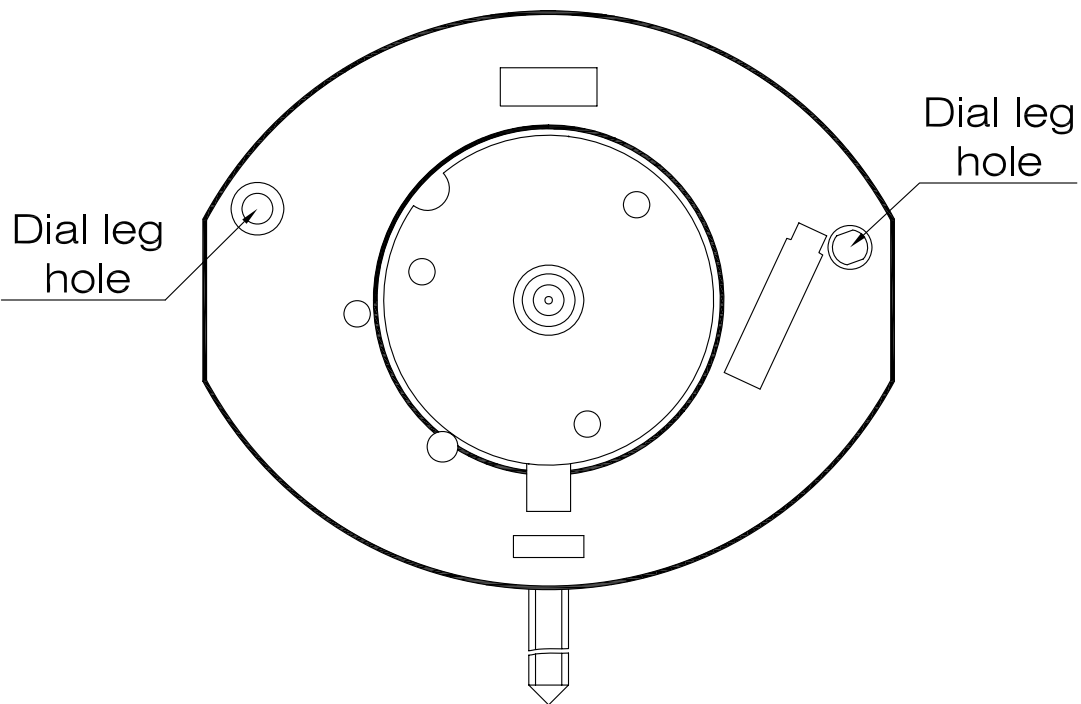
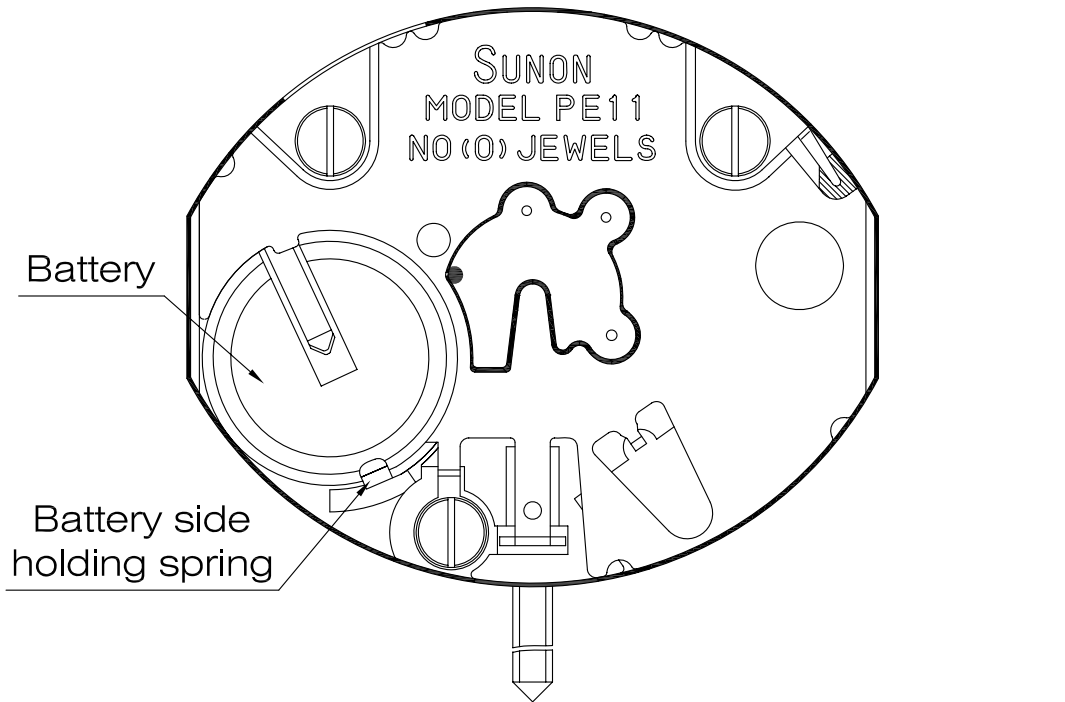
6.AVERAGE OPERATING CURRENT  $2.0\mu\text{A} \sim 2.2\mu\text{A}$

7.OUTPUT TORQUE OF SECOND HAND  $\geq 5.5\mu\text{Nm}$

8.The diameter of the dial leg  $\varnothing 0.70(\text{mm})$

Appearance

PE11

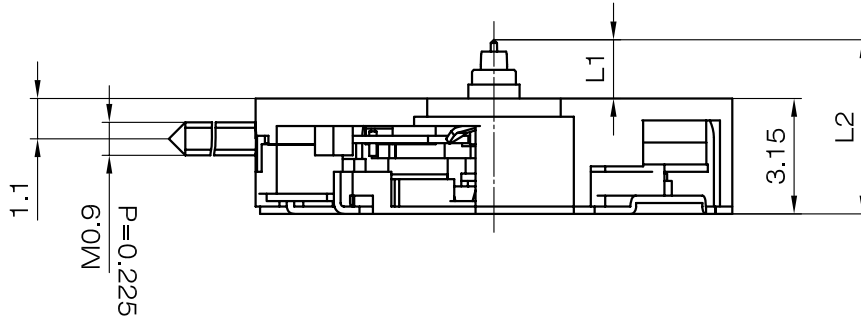


Scale : 5:1  
Unit : mm

Version: 1

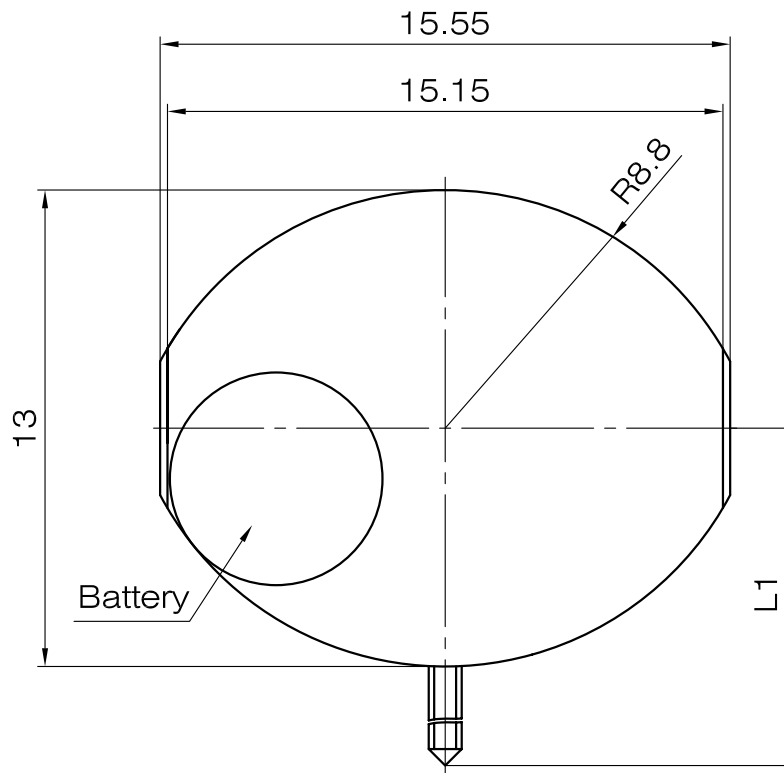
# Casing

PE11



Center post		Height
Maximum height from main plate surface	L1	1.6
Total height incl. movement	L2	4.75

Hand Setting Stem	A
L1	9.2

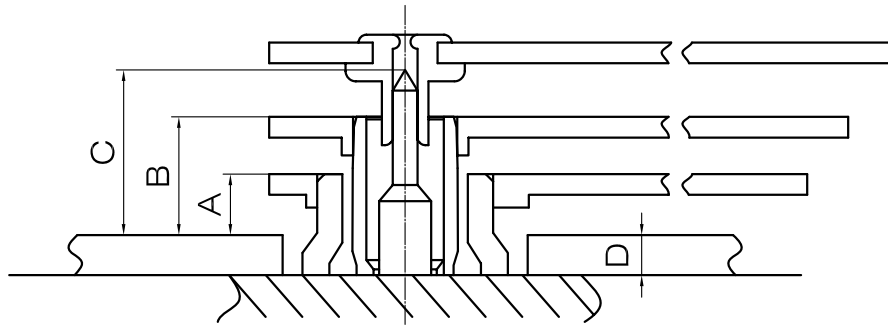
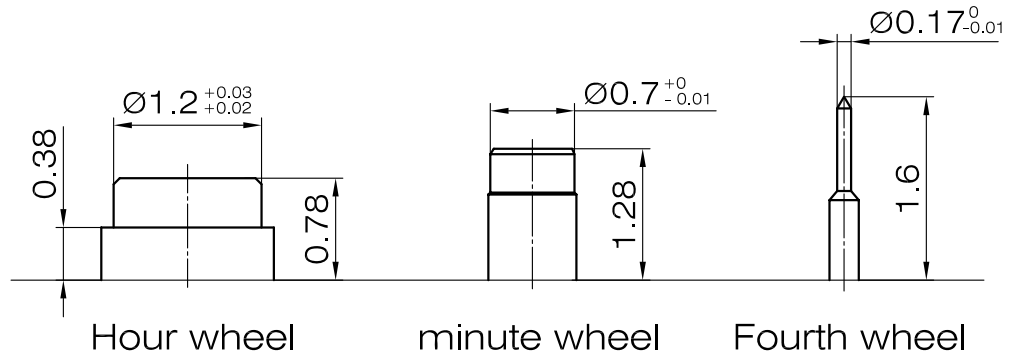


Scale : 4:1  
Unit : mm

Version: 1

Hand fitting

PE11



	A	B	C	D
height	0.38	0.88	1.2	0.4

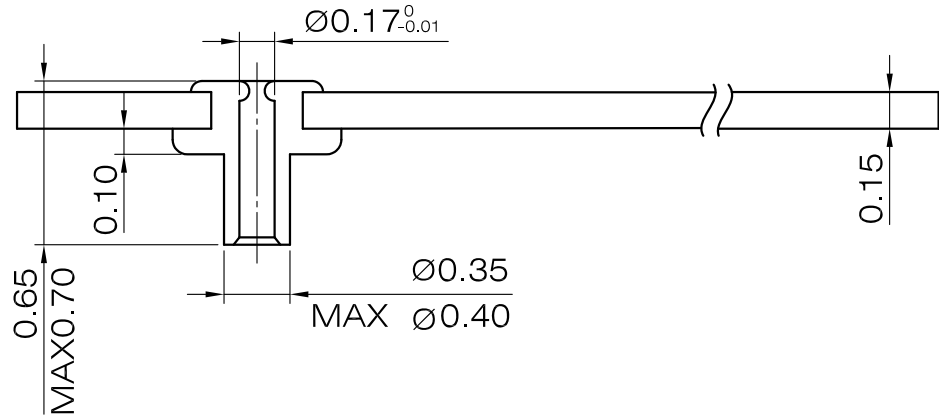
Scale : 20:1  
Unit : mm

Version: 1

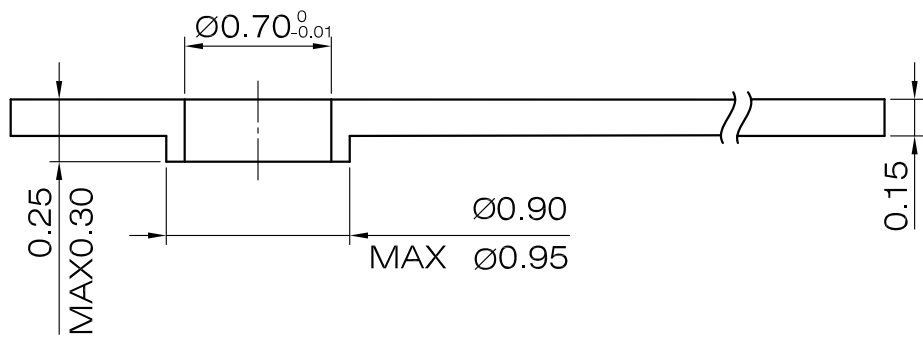
Hands

PE11

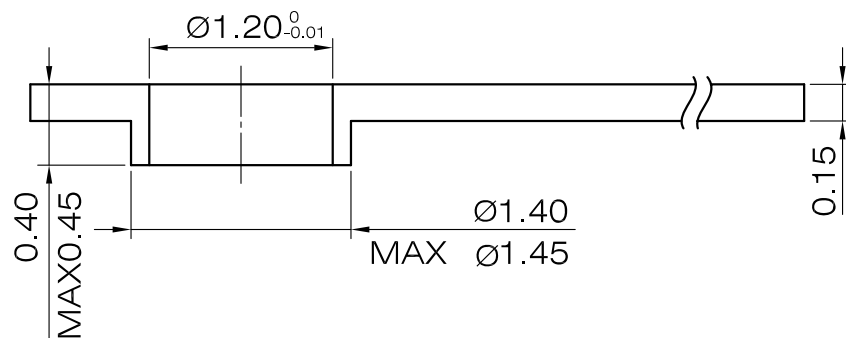
SECOND



MINUTE



HOUR



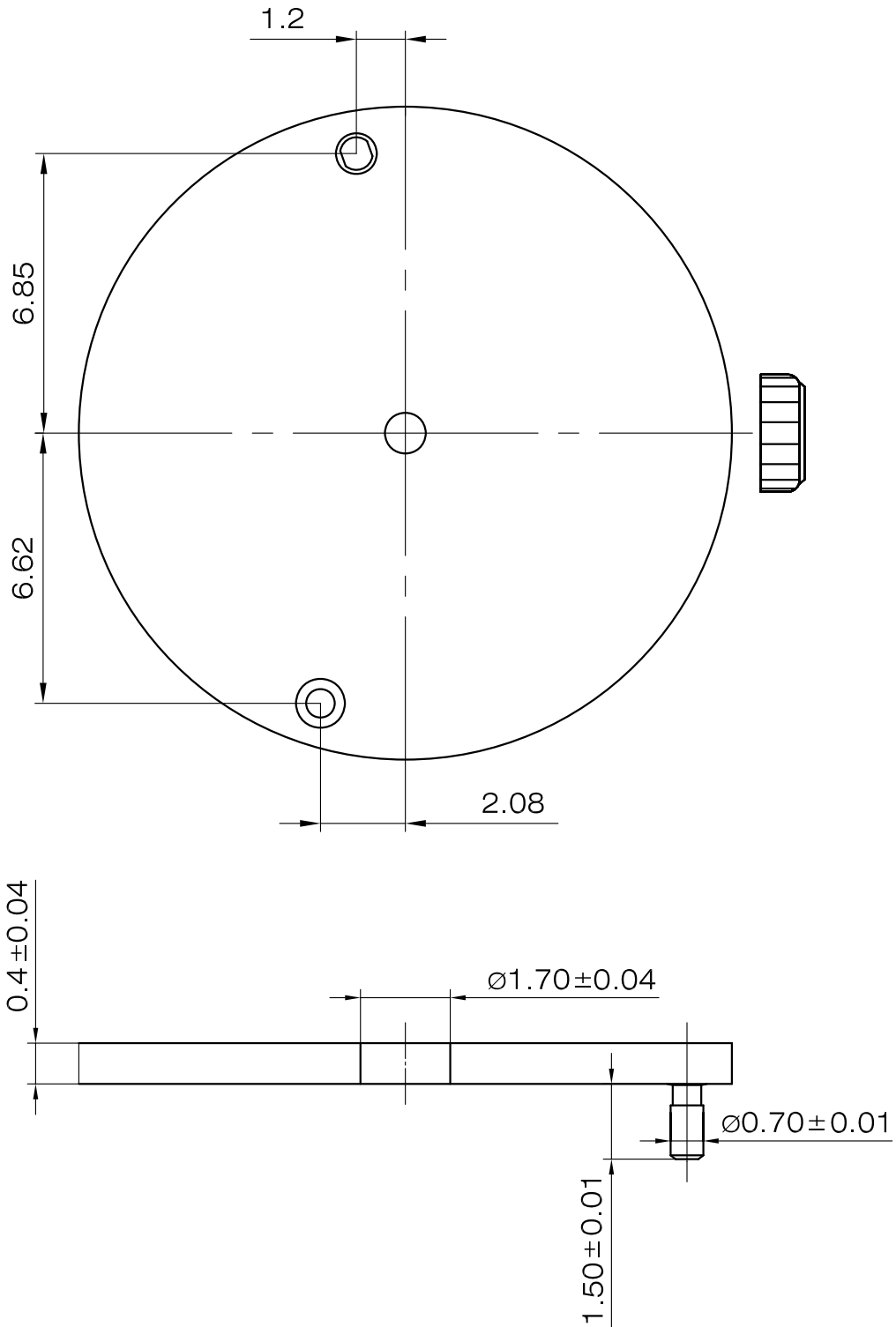
Scale : 20:1

Unit : mm

Version: 1

Dial - 1

PE11



Scale : 8:1  
Unit : mm

Version: 1