

Cal. PE902

Ø 29.75 mm

H 4.52 mm

Item	Version No
Specification-1	Version 2
Specification-2	Version 2
Appearance	Version 2
Casing	Version 2
Hand Fitting	Version 2
Hands	Version 2
Dial - 1	Version 2
Dial - 2	Version 2
Dial - 3	Version 2



Movement Specification-1

PE902 12^{3/4}''' Quartz Movement

3Hands with 3 Eyes/Date (Second Chronograph \ Minute & Calendar\24 Hours)

1. MOVEMENT DIMENSIONS

- Outside diameter Ø29.75mm
- Total height 4.52mm

2. TIME STANDARD

- Frequency of quartz oscillator 32768Hz
- Accuracy Monthly rate: Less than ± 30 seconds per month at normal temperature range

3. BATTERY

- Type Silver oxide battery
- Size Ø9.6 X t 2.1(mm)
- Recommended battery SR921SW

4. OPERATING TEMPERATURE RANGE From -5°C~50°C

5. OPERATING VOLTAGE 1.25V~1.65V

6. AVERAGE OPERATING CURRENT 2.0μA~2.4μA
(Don't open small seconds time)

7.OUTPUT TORQUE OF SECOND HAND $\geq 5.5\mu\text{Nm}$

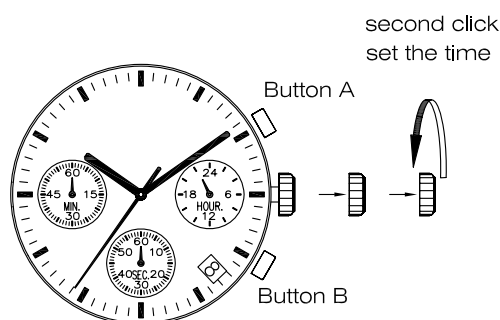
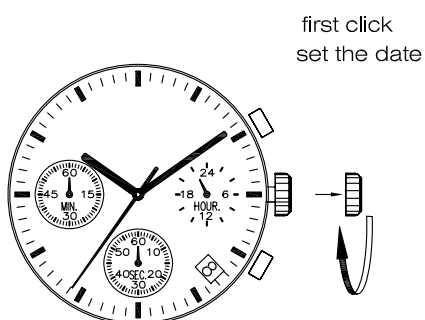
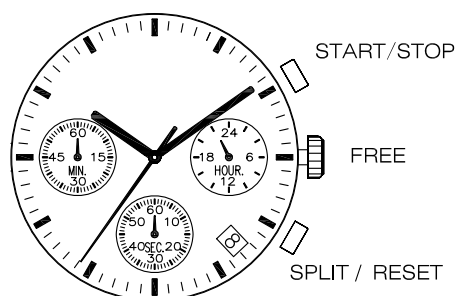
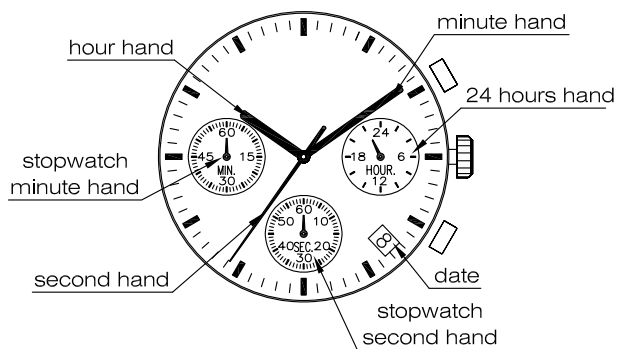
8.The diameter of the dial leg Ø0.75(mm)

9.Surface center bore $\geq \text{Ø}1.80(\text{mm})$

Small needle diameter Ø0.195^{+0.006}_{-0.004}

Movement Specification-2

PE902



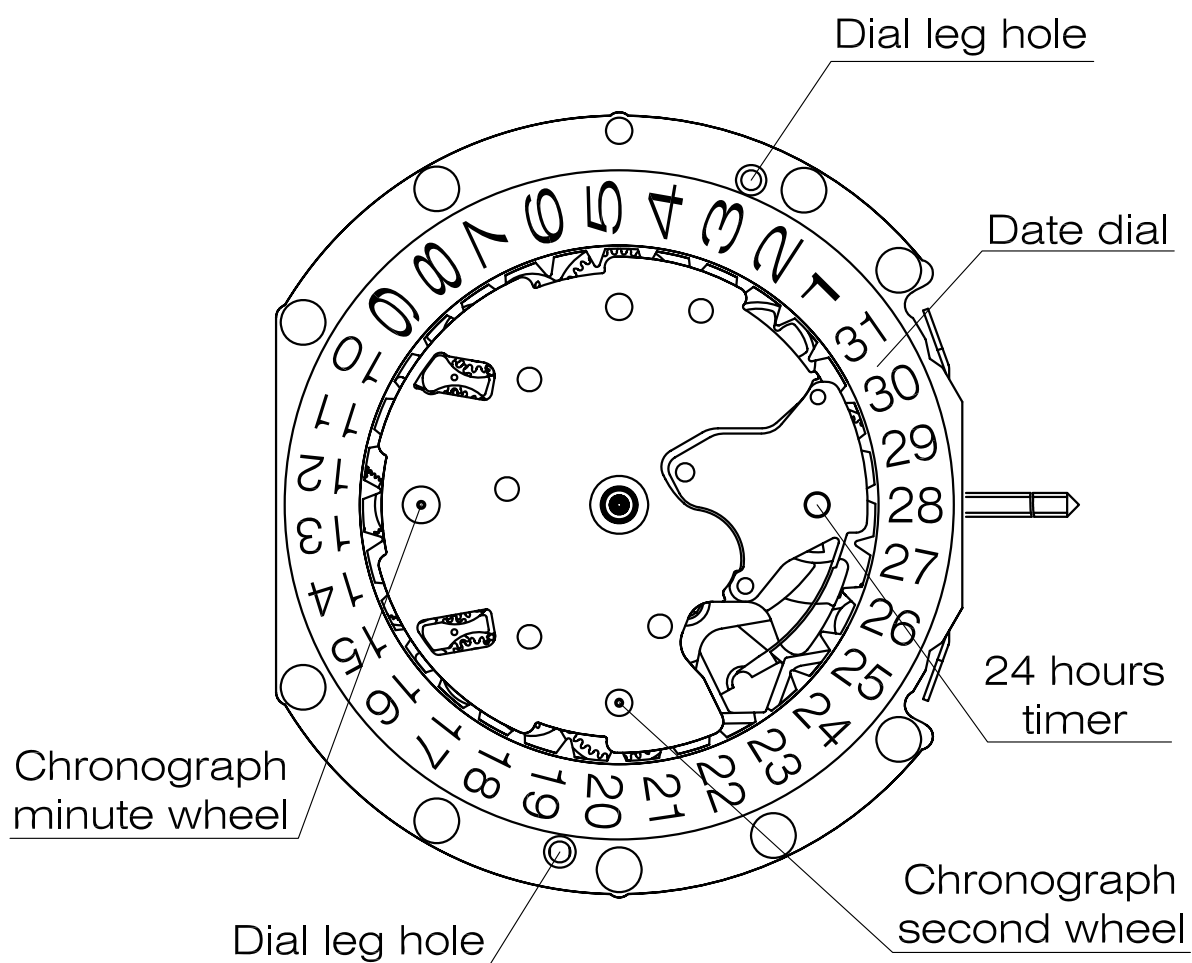
ADJUSTING THE STOPWATCH HAND POSITION

- 1) Pull the crown out of second click
- 2) Press button B to reset Chrono second hands to "0" position.
- 3) Push the crown back to the normal position

Version: 2

Appearance

PE902



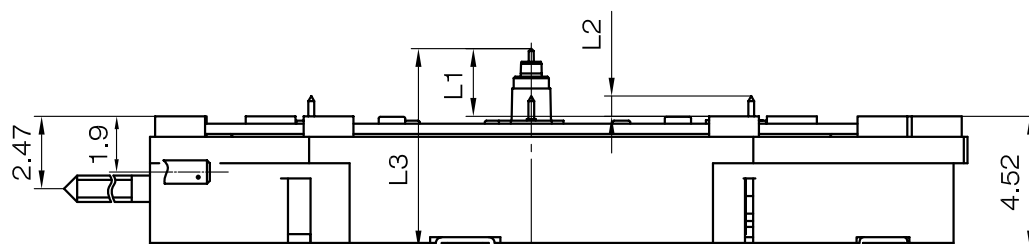
Scale : 4:1

Unit : mm

Version: 2

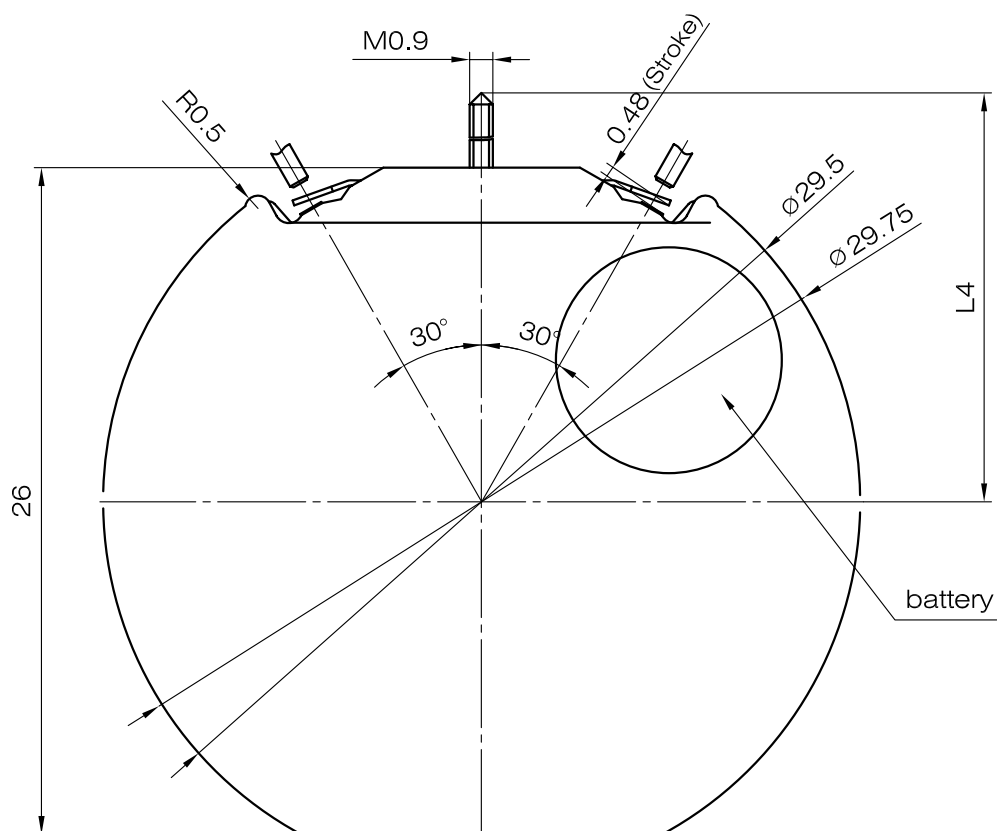
Casing

PE902



Center post		Height
Maximum height from main plate surface	L1	2.31
	L2	0.69
Total height incl. movement	L3	6.83

Hand Setting Stem	A
L4	28.12

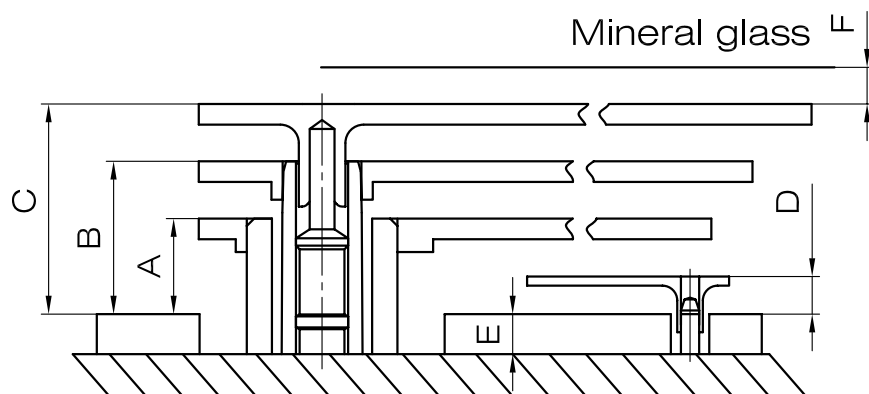
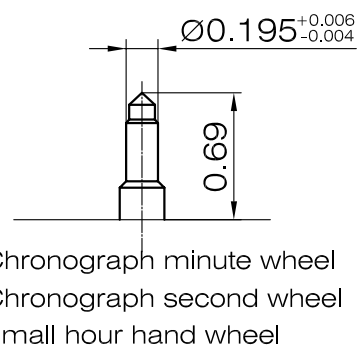
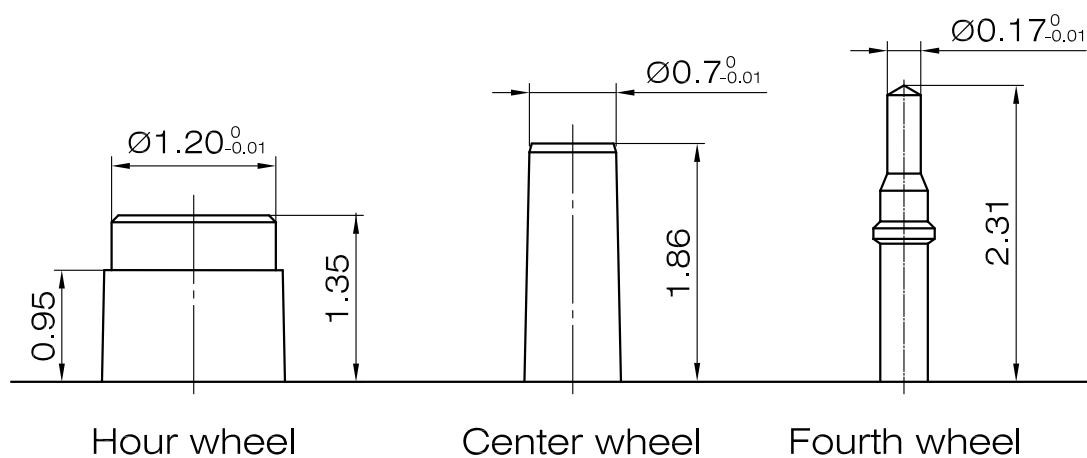


Scale : 4:1
Unit : mm

Version: 2

Hand fitting

PE902



	A	B	C	D	E	F
height	0.95	1.46	2.11	0.45	0.4	0.4

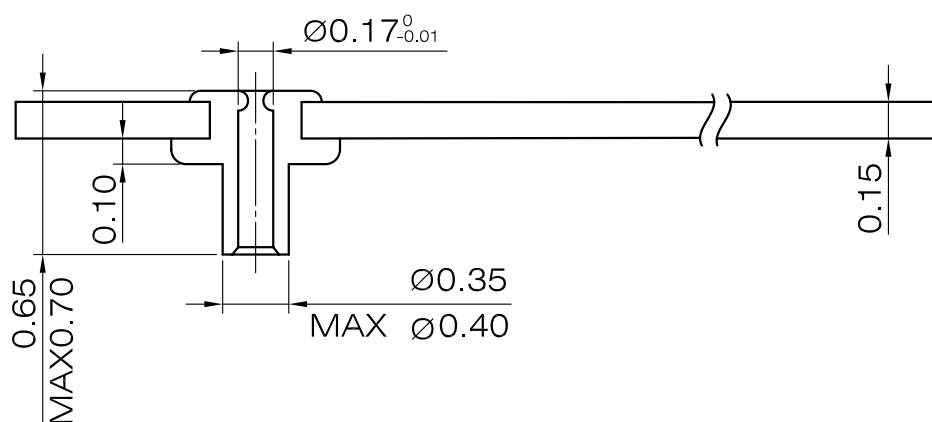
Scale : 20:1
Unit : mm

Version: 2

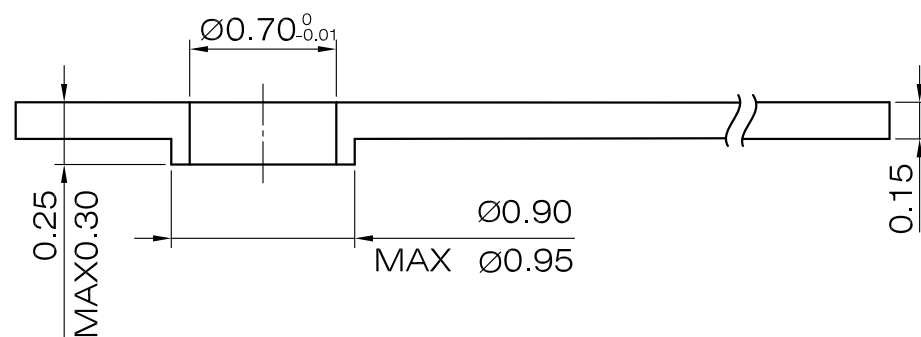
Hands

PE902

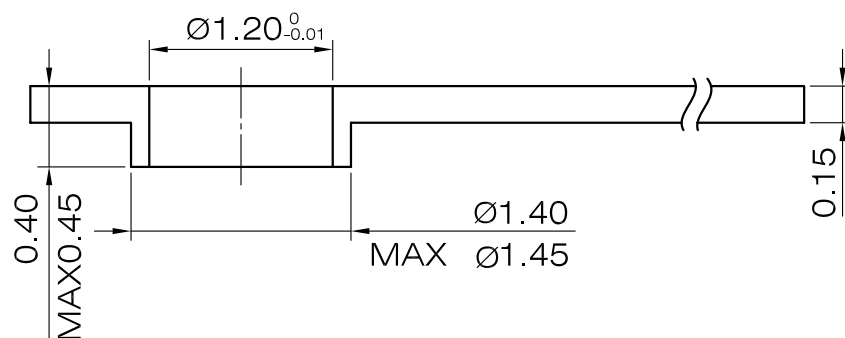
SECOND



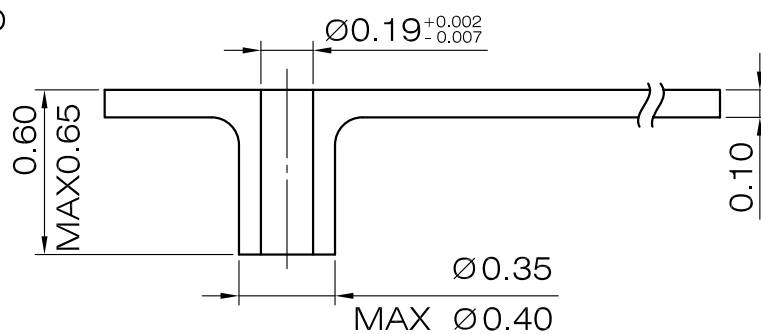
MINUTE



HOUR



CHRONO



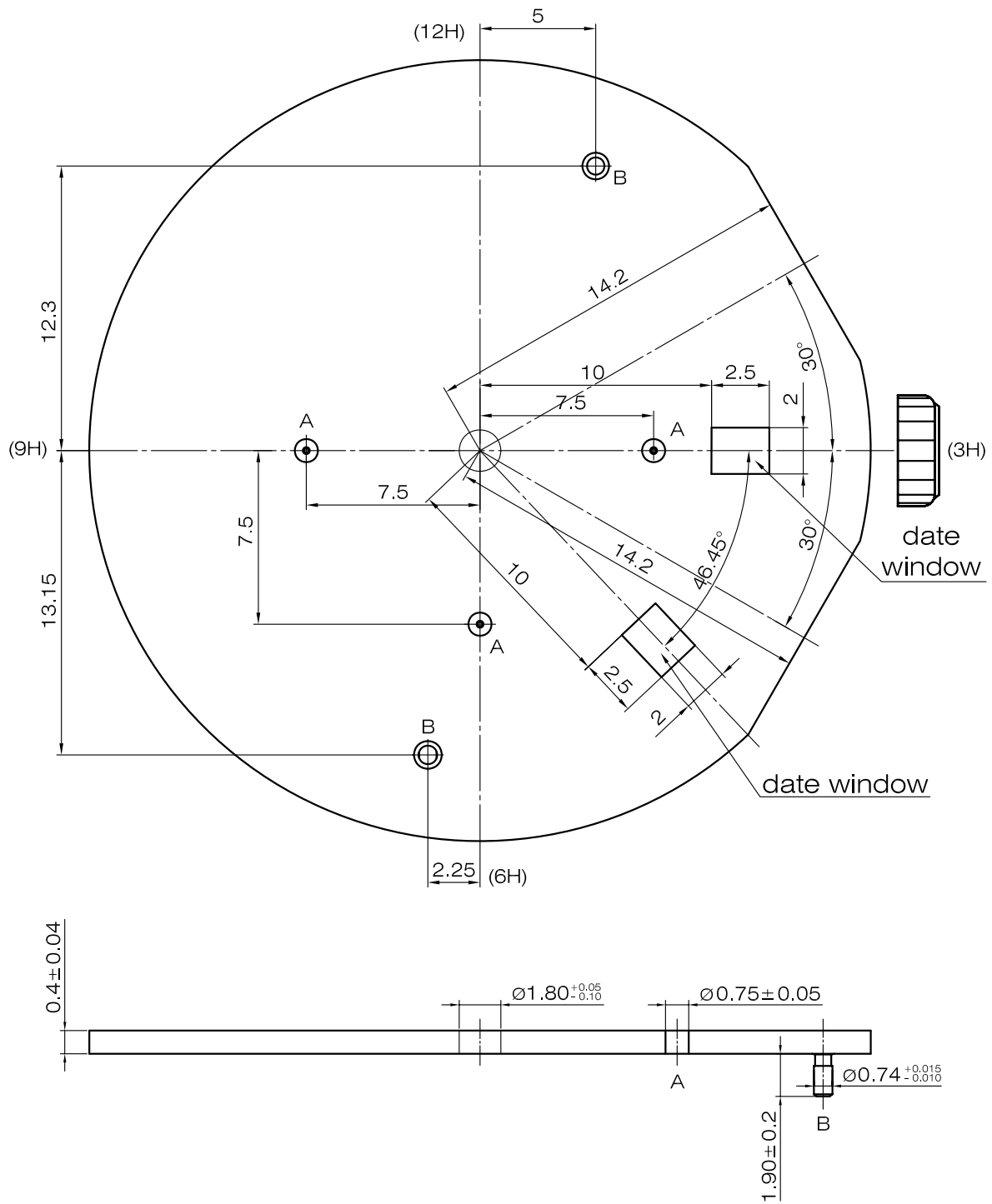
Scale : 20:1

Unit : mm

Version: 2

Dial-1

PE902

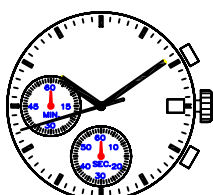


Scale : 5:1
Unit : mm

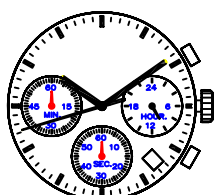
Version: 2

OPERATION MANUAL OF PE90 CHRONOGRAPHS

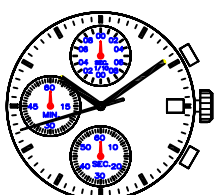
DISPLAY AND CROWN / BUTTON OPERATION



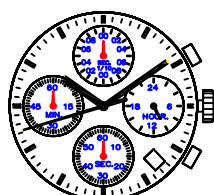
PE901



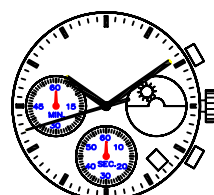
PE902



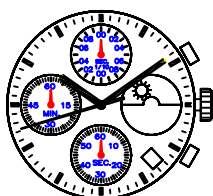
PE903



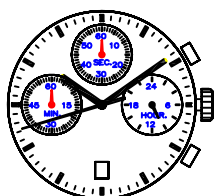
PE904



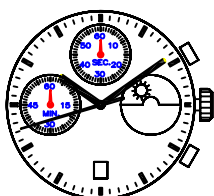
PE905



PE906



PE907



PE908

		PE901	PE902	PE903	PE904	PE905	PE906	PE907	PE908
Hands	Hour	Center Hour Hand							
	Minute	Center Minute Hand							
	Second	Center Second Hand							
Window	Date	can choose the window position or cancel date							
Crown	Date setting	1st click							
	Time setting	2st click							
Sub-dials	Chrono 1/10 second	X		12H		X	12H		X
	Chrono second			6H					12H
	Chrono minute			9H					
	24 hour indicator	X	3H	X	3H	X		3H	X
	Sun & moon		X			3H		X	3H
Buttons	Star / stop	2H (Button A)							
	Reset/split/split release	4H (Button B)							

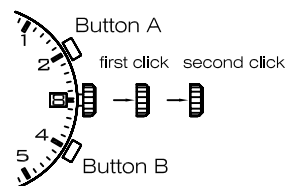
Remarks:

- 1) The measurement time indicatde by the stopwatch hands move independently of the center hands (including 24 hours hands)
- 2) Chrono 1/10 sec: The stopwatch 1/10 second hand moves for a first minute. After one minute, it indicates the measurement time when it is stopped. (applicable to: PE903、PE904、PE906)

ADJUSTING THE STOPWATCH HAND POSITION

If either of the stopwatch hands are not in the "0" position, reset them following the procedure below

- 1) Pull the crown out of second click
- 2) Press button A to reset 1/10 second hands to "0" position;
Press button B to reset Chrono second hands to "0" position.
- *The stopwatch minute hand moves correspondingly with the stopwatch second hands.
- *Each time you press the corresponding button, the pointer jumping one step ,
The hands move quickly if the buttons are kept pressed
- 3) Push the crown back to the normal position



TIME SETTING

*Before setting the time, check that the chronograph measurement is stopped.

- 1) Pull out the crown to the first click
- 2) Turn the crown clockwise until the preview day's date appears.
- 3) Pull out the crown to the second click when the second hand is at the 12 o'clock position

It will stop on the spot. Set the hands to the desired time of the day

(make sure AM/PM is set correctly) by turning the crown

*If choose calibres without date window, Pull out the crown to the second click

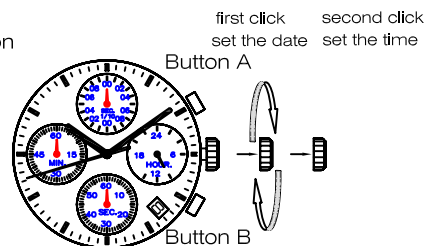
Set the hands to the desired time of the day by turning the crown

* When the crown is at the second click position, do not press any button.

Otherwise the chronograph hands will move.

- 4) Push the crown back in the normal position in accordance with a time signal.

*Do not set the date between 9:00P.M. and 1:00 A.M., otherwise the day may not change properly. If it is necessary to set the date during the time period, firstly change the time to any time outside it, set the date and then reset the correct time

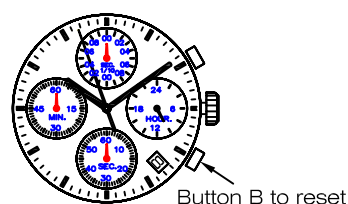
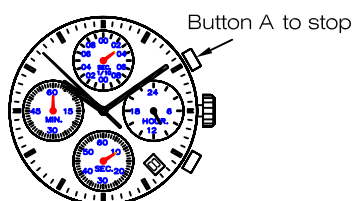
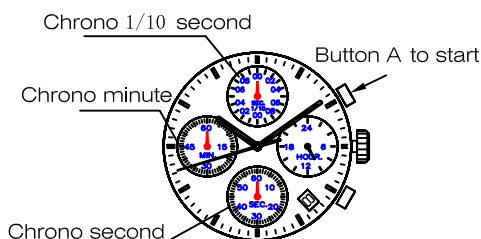


HOW TO USE THE STOPWATCH

- * The measurement time is indicated by the stopwatch hands that move independently of the center hands (and 24-hour hand where applicable).
- * The stopwatch can measure up to 60 minutes
- * The stopwatch measures in 1/10 second increments. (PE903, PE904, PE906)
- * The stopwatch 1/10 second hand moves for a first minute. After one minute, it indicates the measurement time when it is stopped.

Standard measurement (e.g. 100m race)

Press the buttons in the following order:



Stopwatch readings: 10.3 seconds

Accumulated elapsed time measurement (e.g. basketball game)

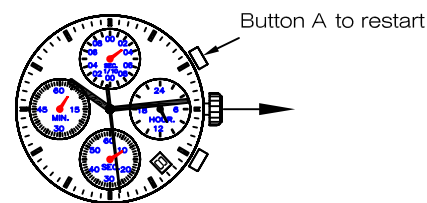
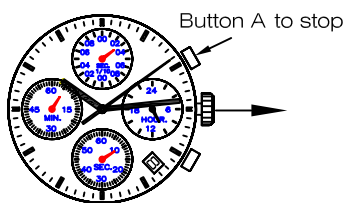
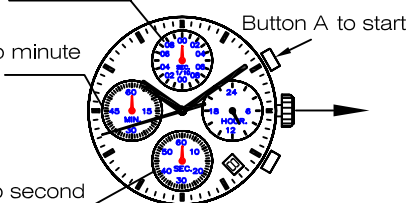


*Restart and stop of the stopwatch can be repeated as many times as necessary by pressing button A.

Chrono 1/10 second

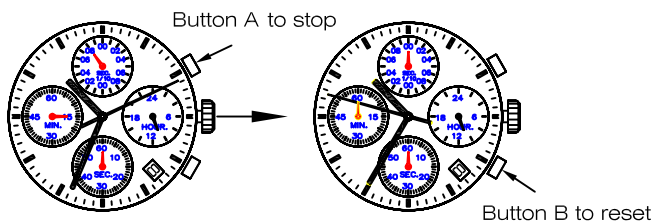
Chrono minute

Chrono second



*Restart and stop of the stopwatch can be repeated as many times as necessary by pressing button A.

Stopwatch readings: 5 minutes and 10.3 seconds



Stopwatch readings: 15 minutes and 0.8seconds

Split time measurement (e.g. 5000m race)

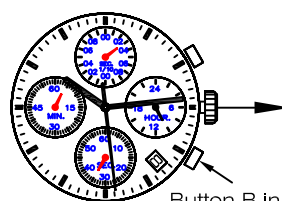
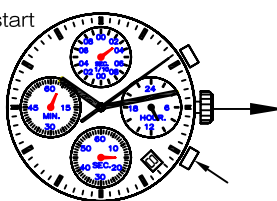
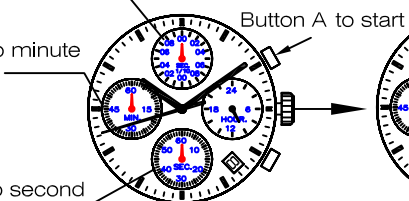


*Measurement and release of the split time can be repeated as many times as necessary by pressing button B

Chrono 1/10 second

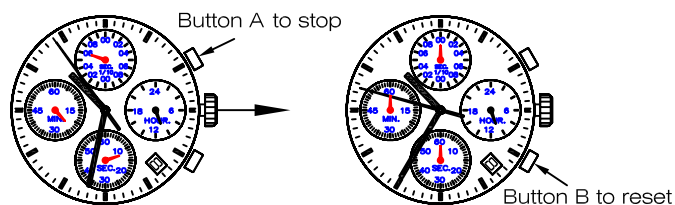
Chrono minute

Chrono second



*Measurement and release of the split time can be repeated as many times as necessary by pressing button B

Stopwatch readings: 4 minutes and 15.3 seconds



Stopwatch readings: 23 minutes and 12.6 seconds